

EaD Comprehensive Lesson Plans



or



0248043888

<https://www.TeachersAvenue.net>

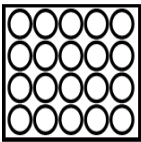
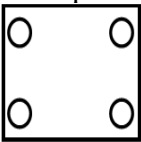
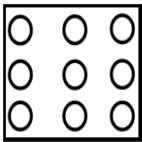
<https://TrendingGhana.net>

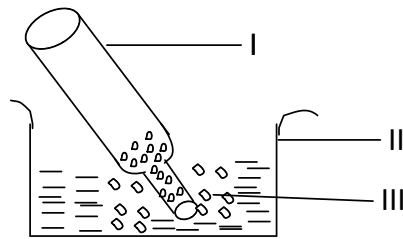
<https://www.mcgregorinriis.com>

BASIC 7

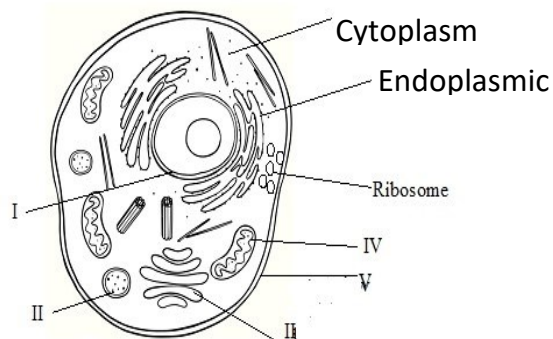
WEEKLY LESSON PLAN – WEEK 1

DISCUSSION OF LAST TERM EXAMINATION QUESTIONS
(REVISION)

Week Ending	30-06-2023				
Class	B.S.7	Class Size:		Duration:	
Subject	Science				
Reference	Examination Questions, Marking Scheme, Learners Note books, Marked Scripts.				
DAYS	PHASE 1 : STARTER	PHASE 2: MAIN			PHASE 3: REFLECTION
WEDNESDAY	Ask Learners to take their copies of the Previous term examination questions and the marked answer sheets for discussion	<ol style="list-style-type: none"> 1. Select a model reader to read the essay type questions to the class. 2. Call Individual Learners at random to answer questions. 3. Discuss questions with the Learners. <p style="text-align: center;">Practical [40 marks]</p> <ol style="list-style-type: none"> 1. a. The diagrams below represent particles of materials. Study them carefully and answer the questions that follow. <div style="display: flex; justify-content: space-around; align-items: center;"> <div style="text-align: center;">  <p>A</p> </div> <div style="text-align: center;">  <p>B</p> </div> <div style="text-align: center;">  <p>C</p> </div> </div> <ol style="list-style-type: none"> i. Identify each of the diagram A, B and C ii. State two structure difference between A and B iii. Which of the diagrams doesn't flow? iv. State the reason to support your answer in (iii) v. Give two materials that can be group under C. <p style="text-align: right;">[10 marks]</p> b. A B7 pupil carried out an experiment to demonstrate the presence of a substance in fresh water. Study it carefully and answer the question that follow. 			Give Learners exercise on samples of the examination questions to answer in their exercise books.



- i. Identify the parts labelled I, II and III
 - ii. State the aim of the experiment
 - iii. What observation can you infer from the diagram?
 - iv. What conclusion can be drawn from the experiment?
- C. The diagram represents a cell observed under a microscope. Study it carefully and answer the questions that follow.



- i. Identify the cell illustrated above.
 - ii. Name the parts labelled I, II, III, IV and V
 - iii. Which part is referred as the “power house”?
 - iv. State the function of the part labelled V.
 - v. The deoxyribonucleic acid (DNA) is found in which part of the diagram? [10 marks]
- d. Study the simple circuit diagram shown below and answer the questions that follow

THURSDAY	A model reader to read multiple choice questions to the class.	<ol style="list-style-type: none"> 1. Call Individual Learners at random to choose correct answers among options. 2. Learners brainstorm to give reasons or explanations to their answers. 3. Discuss with Learners answers to challenging multiple choice. <p>Samples of Objective Test Questions;</p> <ol style="list-style-type: none"> 1. Which of these enzymes acts on beans in the body? <ol style="list-style-type: none"> a. Lipase b. Protease c. Amylase d. Maltase 2. The end product of digestion of a ball of kenkey is <ol style="list-style-type: none"> a. aminoacid b. glucose c. peptises d. fatty acids 3. Which of these enzymes are associated with digestion? <div style="display: flex; justify-content: space-between;"> <div> I. Pepsin III. Lipase </div> <div> II. Renin IV. Amylase </div> </div> <ol style="list-style-type: none"> a. I and III only b. III and IV only c. I, III and IV only d. I, II, III and IV only 4. An organ that produces all three types of digestive enzyme is <ol style="list-style-type: none"> a. liver b. salivary gland c. pancreas d. stomach 5. Where are faeces stored temporarily until are removed from the body? <ol style="list-style-type: none"> a. Anus b. Rectum c. Caecum d. Colon 6. Excess glucose in the body is converted into <ol style="list-style-type: none"> a. urea b. glycogen c. amino acid d. glycerol 	Give Learners exercise on samples of the A-D multiple choice questions to answer in their exercise books.
-----------------	--	---	---

		<div>7. Which of the following produces bile?</div> <div>a. Liver</div> <div>b. Pancreas</div> <div>c. Gall bladder</div> <div>d. Large intestine</div>	
--	--	---	--

Name of Teacher:

School:

District: