

## EaD Comprehensive Lesson Plans



or



**0248043888**

[\*https://www.TeachersAvenue.net\*](https://www.TeachersAvenue.net)

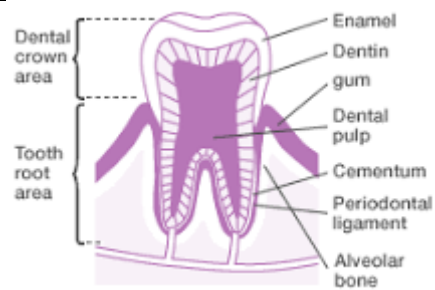
[\*https://TrendingGhana.net\*](https://TrendingGhana.net)

[\*https://www.mcgregorinriis.com\*](https://www.mcgregorinriis.com)

**BASIC 8**

**WEEKLY LESSON PLAN – WEEK 8**





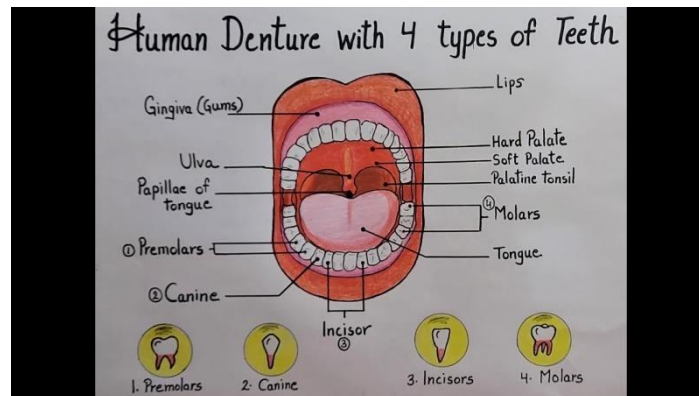
### Structure of the Tooth

- Enamel: The hardest bodily tissue covering the surface of the dental crown.
- Dentin: The tissue that forms the tooth from the dental crown to the tooth root, situated inside the enamel and cementum.
- Cementum: The tissue covering the surface of the tooth root.

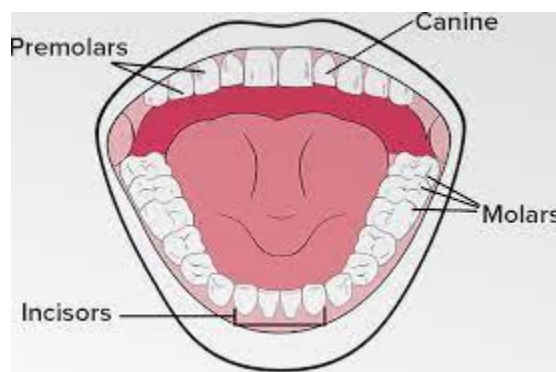
## FRIDAY

Discuss with Learners causes of losing some or all of the human tooth

1. Learners brainstorm to draw the different types of human tooth.
2. Learners in small groups to discuss on the uses of the types of human tooth.
3. Discuss with Learners how to care for the human tooth.



### Types of the Human Tooth;



- ❖ Premolars
- ❖ Canine
- ❖ Molars
- ❖ Incisors

Through questions and answers, conclude the lesson.

### Exercise;

Draw and label the different types of tooth.

Name of Teacher:

School:

District: