

EaD Comprehensive Lesson Plans



or



0248043888

<https://www.TeachersAvenue.net>

<https://TrendingGhana.net>

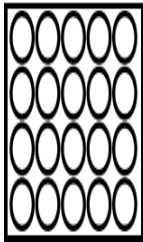
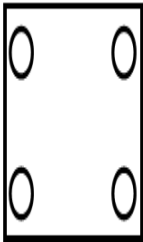
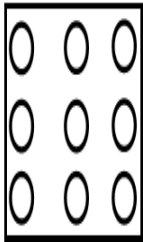
<https://www.mcgregorinriis.com>

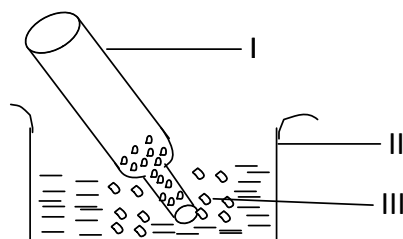
BASIC 7

WEEKLY LESSON PLAN – WEEK 1

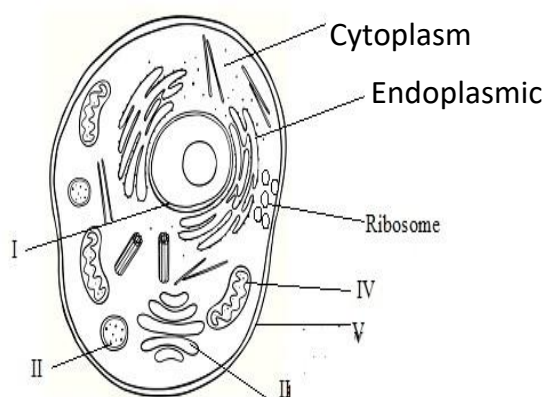
DISCUSSION OF LAST TERM EXAMINATION QUESTIONS

(REVISION)

Week Ending	12-01-2024			
Class	B.S.7	Class Size:		Duration:
Subject	Science			
Reference	Examination Questions, Marking Scheme, Learners Note books, Marked Scripts.			
DAYS	PHASE 1 : STARTER	PHASE 2: MAIN		PHASE 3: REFLECTION
WEDNESDAY	Ask Learners to take their copies of the Previous term examination questions and the marked answer sheets for discussion.	<ol style="list-style-type: none"> Select a model reader to read the essay type questions to the class. Call Individual Learners at random to answer questions. Discuss questions with the Learners. <p>Samples of Essay Type Questions;</p> <p style="text-align: center;">Practical [40 marks]</p> <ol style="list-style-type: none"> <ol style="list-style-type: none"> The diagrams below represent particles of materials. Study them carefully and answer the questions that follow. <div style="display: flex; justify-content: space-around; align-items: center;"> <div style="text-align: center;">  <p>A</p> </div> <div style="text-align: center;">  <p>B</p> </div> <div style="text-align: center;">  <p>C</p> </div> </div> <ol style="list-style-type: none"> Identify each of the diagram A, B and C State two structure difference between A and B Which of the diagrams doesn't flow? State the reason to support your answer in (iii) Give two materials that can be group under C. <p style="text-align: right;">[10 marks]</p> <ol style="list-style-type: none"> A B7 pupil carried out an experiment to demonstrate the presence of a substance in fresh water. Study it carefully and answer the question that follow. 		Give Learners exercise on samples of the examination questions to answer in their exercise books.



- Identify the parts labelled I, II and III
 - State the aim of the experiment
 - What observation can you inference from the diagram?
 - What conclusion can be drawn from the experiment?
- C. The diagram represents a cell observed under a microscope. Study it carefully and answer the questions that follow.



THURSDAY

A model reader to read multiple choice questions to the class.

- Call Individual Learners at random to choose correct answers among options.
- Learners brainstorm to give reasons or explanations to their answers.
- Discuss with Learners answers to challenging multiple choice.

Samples of Objective Test Questions;

- Which of these enzymes acts on beans in the body?
 - Lipase
 - Protease
 - Amylase
 - Maltase
- The end product of digestion of a ball of kenkey is

Give Learners exercise on samples of the A-D multiple choice questions to answer in their exercise books.

