

EaD Comprehensive Lesson Plans



or



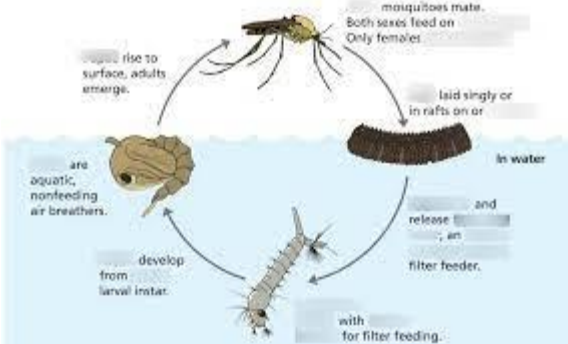
0248043888

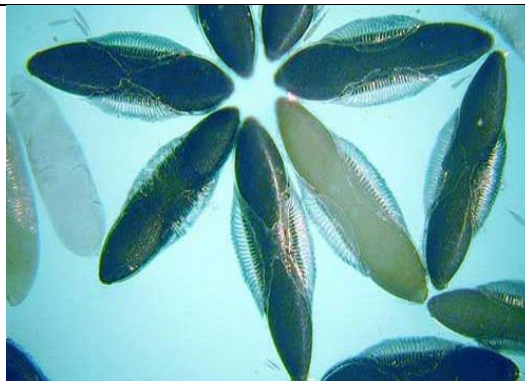
<https://www.TeachersAvenue.net>

<https://TrendingGhana.net>

BASIC 8

WEEKLY LESSON PLAN – WEEK 6

Strand:	Cycles		Sub-Strand:		The life cycle of Organisms	
Content Standard:	B8.2.2.1 Demonstrate an activity to show the life cycle of Anopheles mosquito and understanding of how the effects of the mosquito on humans can be managed					
Indicator (s)	B8.2.2.1.1 Describe the life cycle and economic importance of Anopheles mosquito			Performance Indicator: Leaners can draw the life cycle of Anopheles mosquito.		
Week Ending	18-10-2024					
Class	B.S.8	Class Size:		Duration:		
Subject	Science					
Reference	Science Curriculum, Teachers Resource Pack, Learners Resource Pack, Textbook.					
Teaching / Learning Resources	Bottle tops, salt, sugar, sand, gari, gravel, oil, water, Poster, Pictures.		Core Competencies:		<ul style="list-style-type: none">• Communication and Collaboration• Critical thinking and Problem Solving• Digital Literacy	
DAYS	PHASE 1 : STARTER	PHASE 2: MAIN			PHASE 3: REFLECTION	
MONDAY	Discuss keywords and terminologies in the lesson with the learners.	<div><ul style="list-style-type: none">○ Discuss with Learners the structure of the life cycle of Anopheles Mosquito using a Poster displaying the Life Cycle.○ Assist Learners to explain each stage of the cycle.○ Learners brainstorm to draw the life cycle of Anopheles Mosquito.</div> <div></div> <div>Stages of the cycle;</div> <div><ul style="list-style-type: none">○ Eggs</div>			Individual Learners practice drawing the life cycle of Anopheles Mosquito. Exercise; Explain each stage of the life cycle of Anopheles mosquito.	



Unique *Anopheles* eggs have floats on either side.

- Adult, female mosquitoes lay eggs one at a time directly on water. The eggs float on the surface of the water.
- Adult, female mosquitoes lay 50–200 eggs at a time.
- Eggs do not tolerate drying out.

○ Larva



Larvae live in the water.

- Larvae live in the water. They hatch from mosquito eggs.
- *Anopheles* larvae breathe by using special organs (called spiracles) located on their abdomen.
- Larvae shed their skin (molt) four times during this stage before becoming pupae.

○ Pupa



Pupae live in the water.

- Pupae live in water. Pupae do not have external mouthparts, so they do not eat during this stage.
- An adult mosquito emerges from a pupa and flies away.
- Adult




An adult mosquito emerges from a pupa.



An adult female mosquito bites a person.

- Adult female mosquitoes bite people and animals. Female mosquitoes need blood to produce eggs.
- Adult female *Anopheles* mosquitoes prefer to feed

		<p>on people or animals, such as cattle.</p> <ul style="list-style-type: none"> Some <i>Anopheles</i> male mosquitoes fly in large swarms, usually around dusk, and the females fly in the swarms to mate. After blood feeding, the female mosquitoes rest for a few days while the blood digests and the eggs develop. After the eggs develop, the female lays them in the water sources. <i>Anopheles</i> mosquitoes generally don't fly more than a 1.2 miles (2 km) from their larval habitats. <i>Anopheles</i> mosquitoes are attracted to dark, sheltered areas for resting during the daytime. 	
THURSDAY	Review Learners knowledge on the previous lesson.	<ol style="list-style-type: none"> Learners brainstorm to explain the meaning of 'life span'. Discuss the life span of Mosquito with the Learners. Assist Learners to compare the life span of <i>Anopheles</i> mosquito to that of other living organisms. Learners in small groups to discuss about Mosquito breeding sources . <div data-bbox="438 900 786 1225" data-label="Diagram"> </div> <div data-bbox="798 916 1085 1209" data-label="Image"> </div> <p>Mosquito breeding sources;</p> <ul style="list-style-type: none"> Standing water. Any stagnant water body near your house is an invitation for female mosquitoes to lay eggs in it. Air Conditioner drip trays. Children's play sets. Tree stumps and wood piles. Trash cans. Pools and spas. Birdbaths. Old Tires. 	<p>Through questions and answers, conclude the lesson.</p> <p>Exercise;</p> <p>State 5 Mosquito breeding sources.</p>
FRIDAY	Through questions and answers, review Learners knowledge on the previous	<ol style="list-style-type: none"> Learners brainstorm to identify 4 things that attracts mosquitoes. Assist Learners to describe the economic importance of Mosquito. Learners in small groups to discuss the effects of Mosquito bite. Educate Learners on how to prevent Mosquito bite. 	<p>Reflect on the need to prevent mosquito bite.</p> <p>Exercise;</p> <ol style="list-style-type: none"> State 4 things that attracts

	lesson.	<p>Things that Attracts Mosquitos;</p> <ul style="list-style-type: none">• Blood, Sweat, and Beers. Seriously.• Clothing Colour.• Lotions, Perfumes, and Colognes. .• Standing Water.• Tall Grass and Vegetation. <div data-bbox="539 340 1090 707"></div> <ul style="list-style-type: none">• Malaria: Parasites cause this life-threatening disease by infecting and destroying red blood cells. To control and treat malaria, early diagnosis is crucial.• West Nile virus: Most people with West Nile Virus show no symptoms, although some develop a fever or other flu-like symptoms. For a small number of people with the virus, a serious illness develops in the nervous system.• Zika virus: This is a generally mild condition that initially causes fever, joint pain, and rash. The initial symptoms of Zika usually pass after 1 week, but the disease can lead to congenital anomalies if a woman becomes pregnant after receiving a mosquito bite.• Yellow fever: This virus causes inflammation in the brain and spinal cord. Its symptoms include fever and sore throat.• Dengue fever: This disease can trigger high fever, rash, muscle soreness, and joint pain. In the most extreme cases, severe bleeding, shock, and death can occur. Dengue fever is mostly active in tropical and sub-tropical regions.	<p>mosquitoes.</p> <p>2. Explain 4 effects of mosquitoes.</p>
--	---------	------------------------------------------------------------------------------------------------------------------------------------------------------------------------------------------------------------------------------------------------------------------------------------------------------------------------------------------------------------------------------------------------------------------------------------------------------------------------------------------------------------------------------------------------------------------------------------------------------------------------------------------------------------------------------------------------------------------------------------------------------------------------------------------------------------------------------------------------------------------------------------------------------------------------------------------------------------------------------------------------------------------------------------------------------------------------------------------------------------------------------------------------------------------------------------------------------------------------------------------------------------------------------------------------------------------------------------------------------------------------------------------------------------------------------------------------------------------------------------------------------------------------------------------------------------------------------------------------------------------------------------	---------------------------------------------------------------

		<p>Skeeter Syndrome</p>  <p>Allergic reaction to mosquito bite</p> <p><small>Cleveland Clinic ©2012</small></p>	
--	--	------------------------------------------------------------------------------------------------------------------------------------------------------------------------------------------------------	--

Name of Teacher:

School:

District: